

# Human CD228 Protein; His Tag

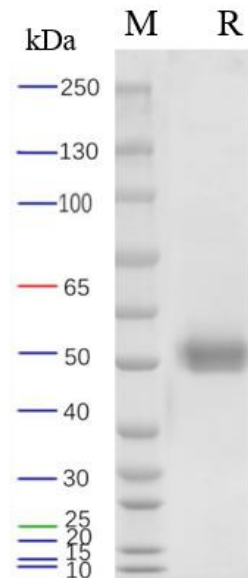
## Product Information

Product Name	Human CD228 Protein; His Tag
Storage temp.	Store at $\leq -70^{\circ}\text{C}$ , stable for 6 months after receipt. Recommend to aliquot the protein into smaller quantities for optimal storage. Please minimize freeze-thaw cycles.
Catalog# / Size	GM-87529RP-100 / 100 $\mu\text{g}$ GM-87529RP-1000 / 1 mg

## Protein Information

Alternative Names	Melanotransferrin,CD228,MFI2,MAP97,MELTF
Source	Human CD228 Protein; His Tag (GM-87529RP) is expressed from human 293 cells (HEK-293). It contains AA Asp 358 - Ser 706 (Accession # P08582-1). This protein carries a His tag at the C-terminus.
Purity	> 95% as determined by SDS-PAGE
Endotoxin	< 1 EU/ $\mu\text{g}$ , determined by LAL gel clotting assay
Predicted Mol Mass	39.1 KDa
Formulation	Supplied as a 0.2 $\mu\text{m}$ filtered solution of PBS, pH7.4.
Description	CD228 protein (Melanotransferrin, MELTF), also known as MFI2 or MAP97, is a transmembrane glycoprotein belonging to the transferrin family, first discovered in melanoma cells. It can bind iron ions, although its iron transport capacity is relatively weak. It is mainly found on the cell surface or secreted in a soluble form, widely participating in various physiological and pathological processes.  Studies have shown that CD228 is closely related to cell adhesion, migration, angiogenesis, and tumor growth. Its high expression in various cancers makes it a potential cancer biomarker and therapeutic target. Additionally, CD228 contributes to the regulation of iron metabolism and immune responses, holding significant value for research and clinical applications.

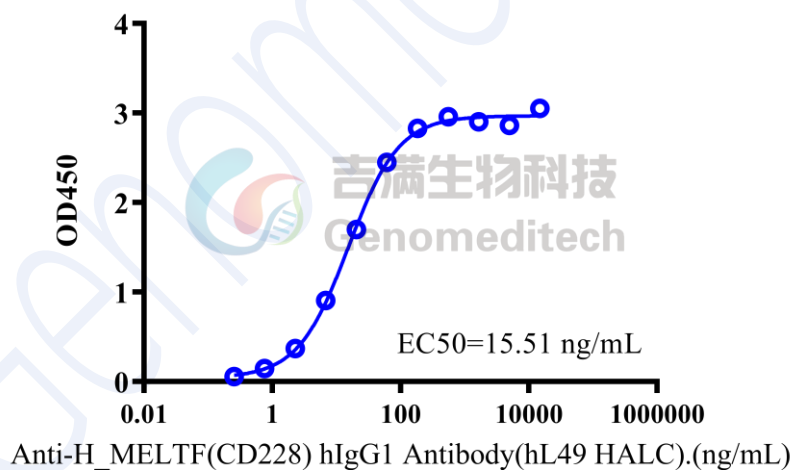
## SDS-PAGE



On SDS-PAGE under reducing (R) condition. The gel was stained overnight with Coomassie Blue. The purity of the protein is greater than 95%.

## Bioactivity-ELISA

**Human CD228 Protein; His Tag, ELISA**  
**0.6  $\mu$ g Anti-His mIgG2a Antibody+0.1  $\mu$ g Human CD228 Protein; His Tag of per well**



Human CD228 Protein; His Tag (Catalog # GM-87529RP) was immobilized at 1  $\mu$ g/ml (100  $\mu$ L/well) on Anti-His mIgG2a Antibody (Catalog # GM-59493AB) (0.6  $\mu$ g/well) precoated. Increasing concentrations of Anti-H\_MELTF(CD228) hIgG1 Antibody(hL49 HALC) (Catalog # GM-38396AB) were added.